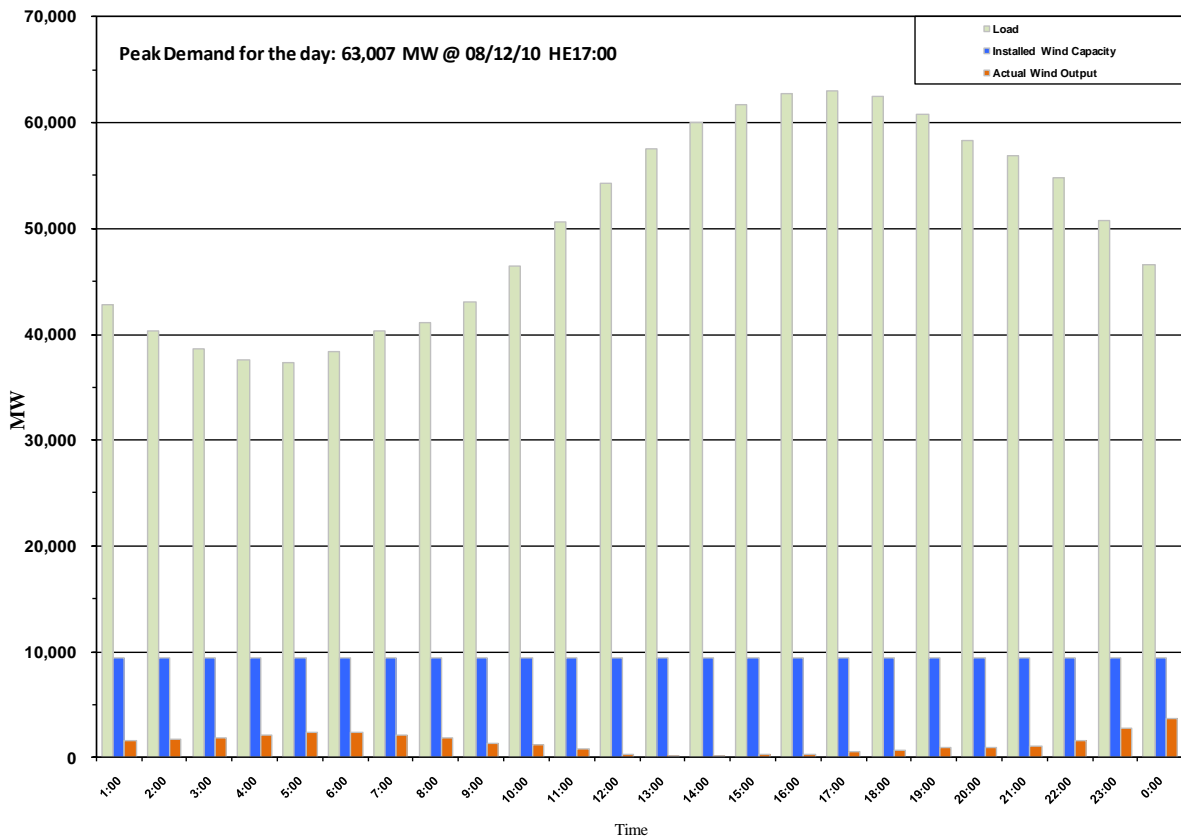




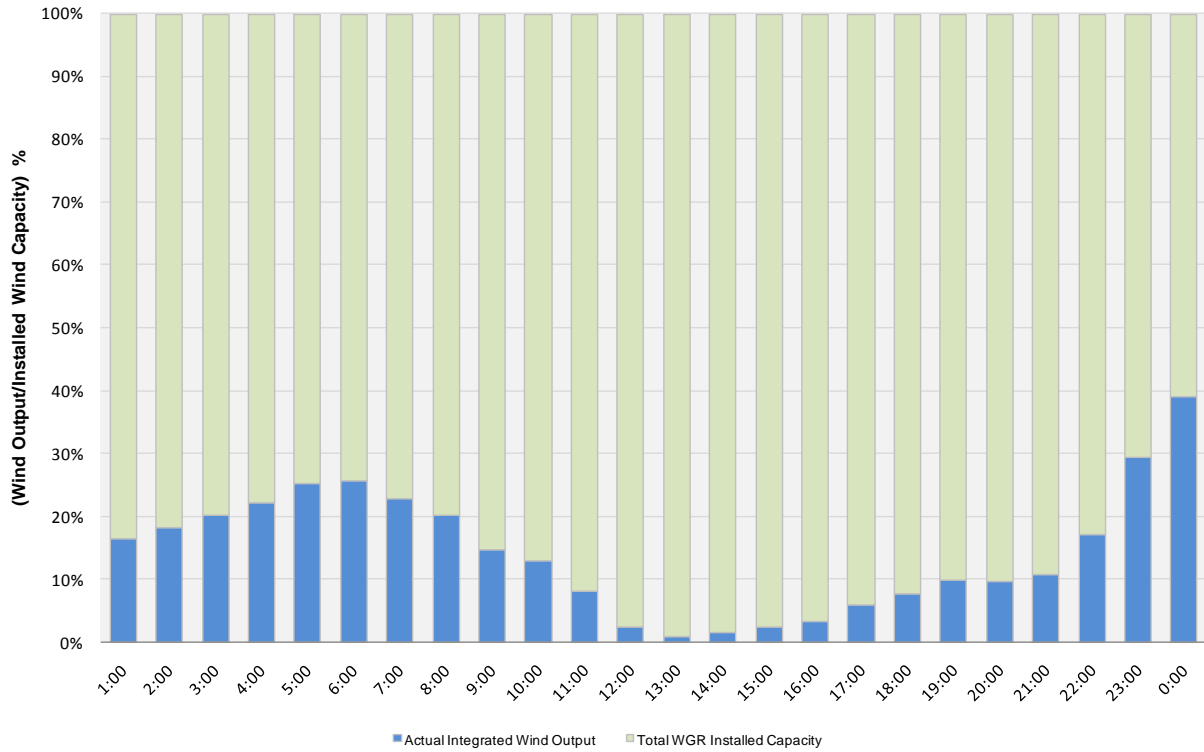
## ERCOT Grid Operations Wind Penetration Report: 08/12/10

|                      |                  |
|----------------------|------------------|
| Peak Load            | <b>63,007 MW</b> |
| Load Peak Hour       | <b>17</b>        |
| Wind Record 06/12/10 | <b>7016 MW</b>   |
| Max Wind value       | <b>4047 MW</b>   |
| Wind Peak Hour       | <b>23:59:52</b>  |
| Wind Penetration %   | <b>9.06</b>      |

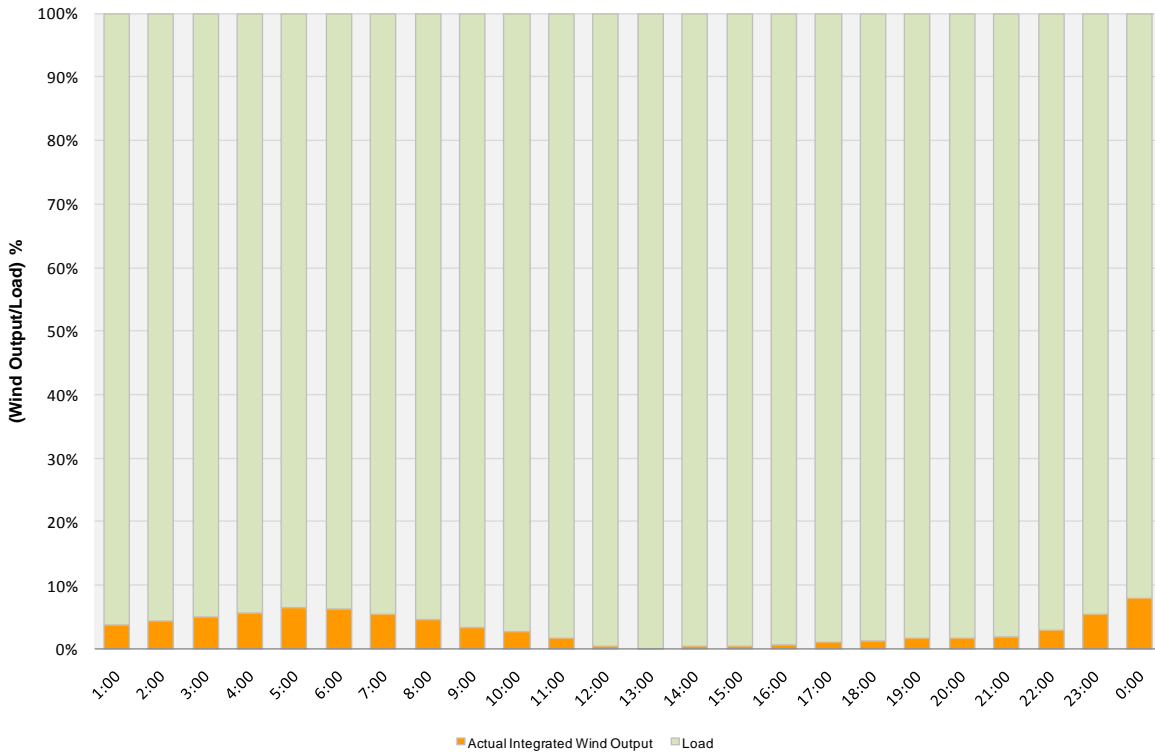




### Actual Wind Output as a Percentage of the Total Installed Wind Capacity 08/12/2010



### Actual Wind Output as a Percentage of the ERCOT Load 08/12/2010





ERCOT Load vs. Actual Wind Output 08/05/10 - 08/12/10

